

Section
12

Section
11

Section
8N

Section
8S

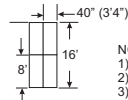
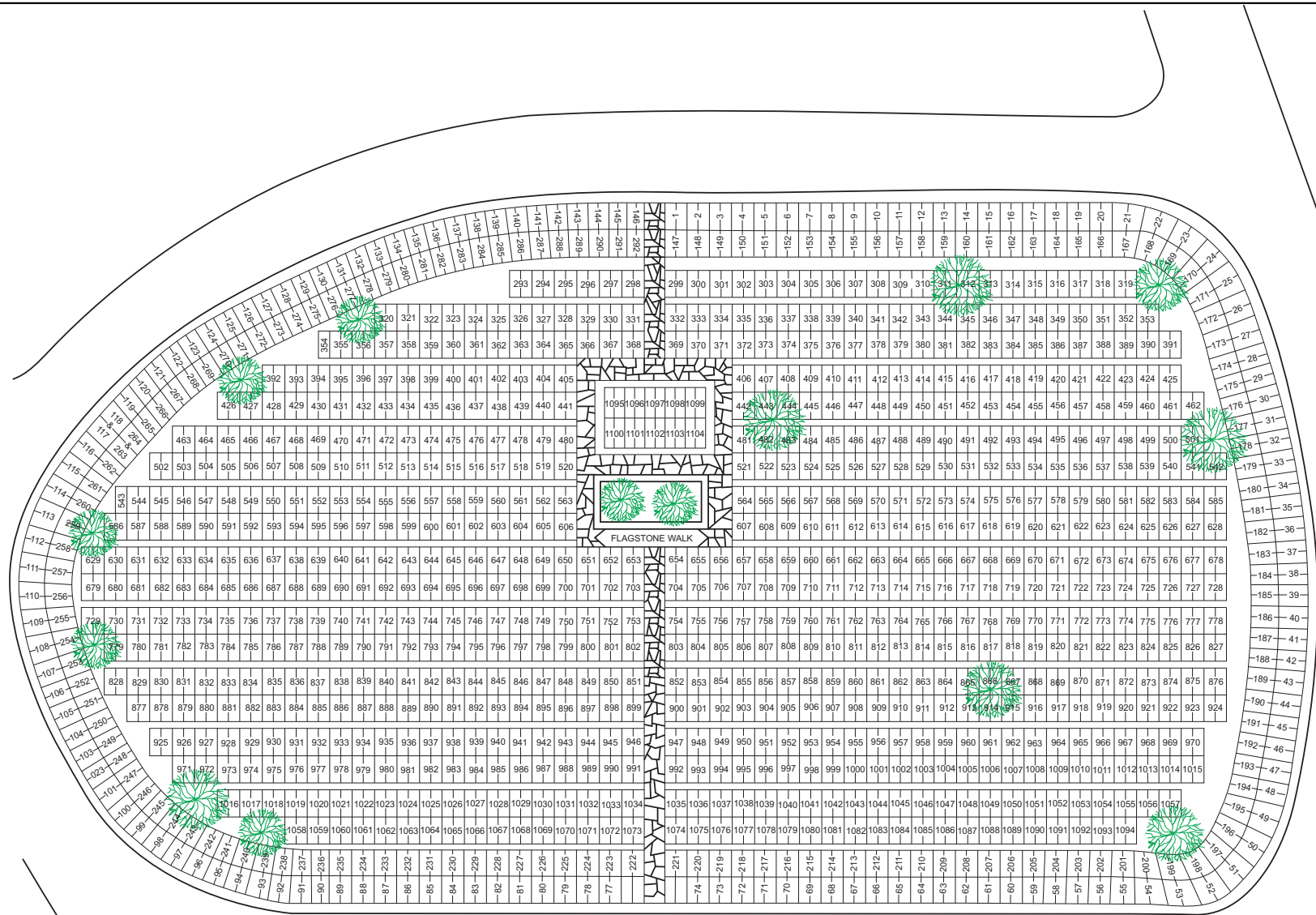
Section
7

Section
9

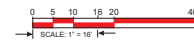
Section
6



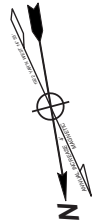
SECTION 6



- NOTE
- 1) GRAVES ARE 3'4" X 8'
 - 2) Lots 6'8" x 8' lots (unless otherwise noted on the plan)
 - 3) ALL PATHS ARE 2' WIDE



Disclaimer: The information shown on this map is based on documents and information supplied by the client. Accuracy of images is not suitable for engineering purposes. topoGraphix assumes no responsibility for it's content.



SAINT MARY CEMETERY

SECTION 6

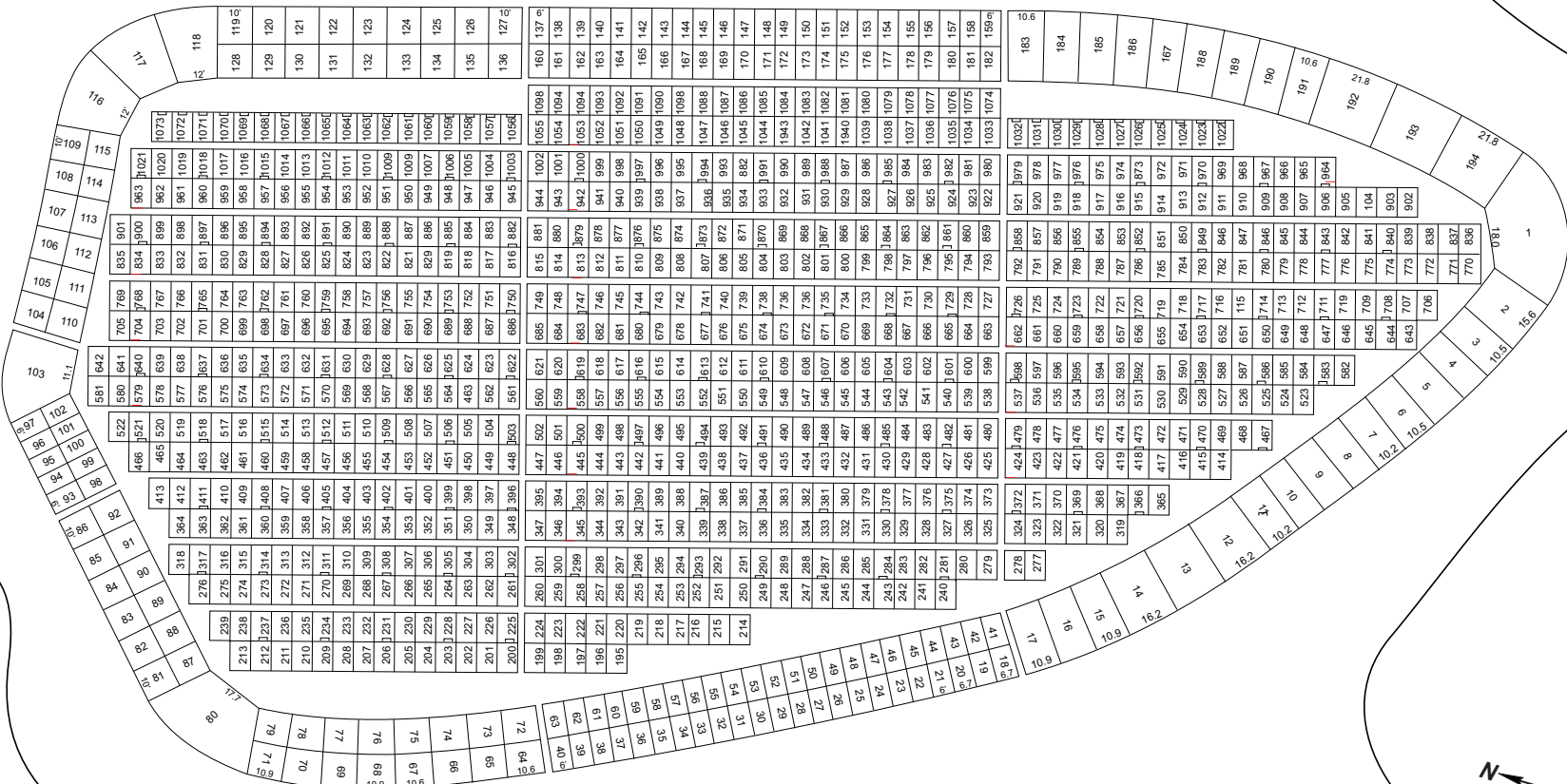
NOTE: The scale, grave location and measurements shown are for general reference use only. This is not a site surveyed document.

Scale: 1" = 16'

Sheet 2 of 11

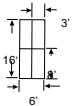
Copyright © 2006 by topoGraphix.com

SECTION 7



Typical layout

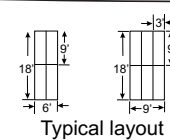
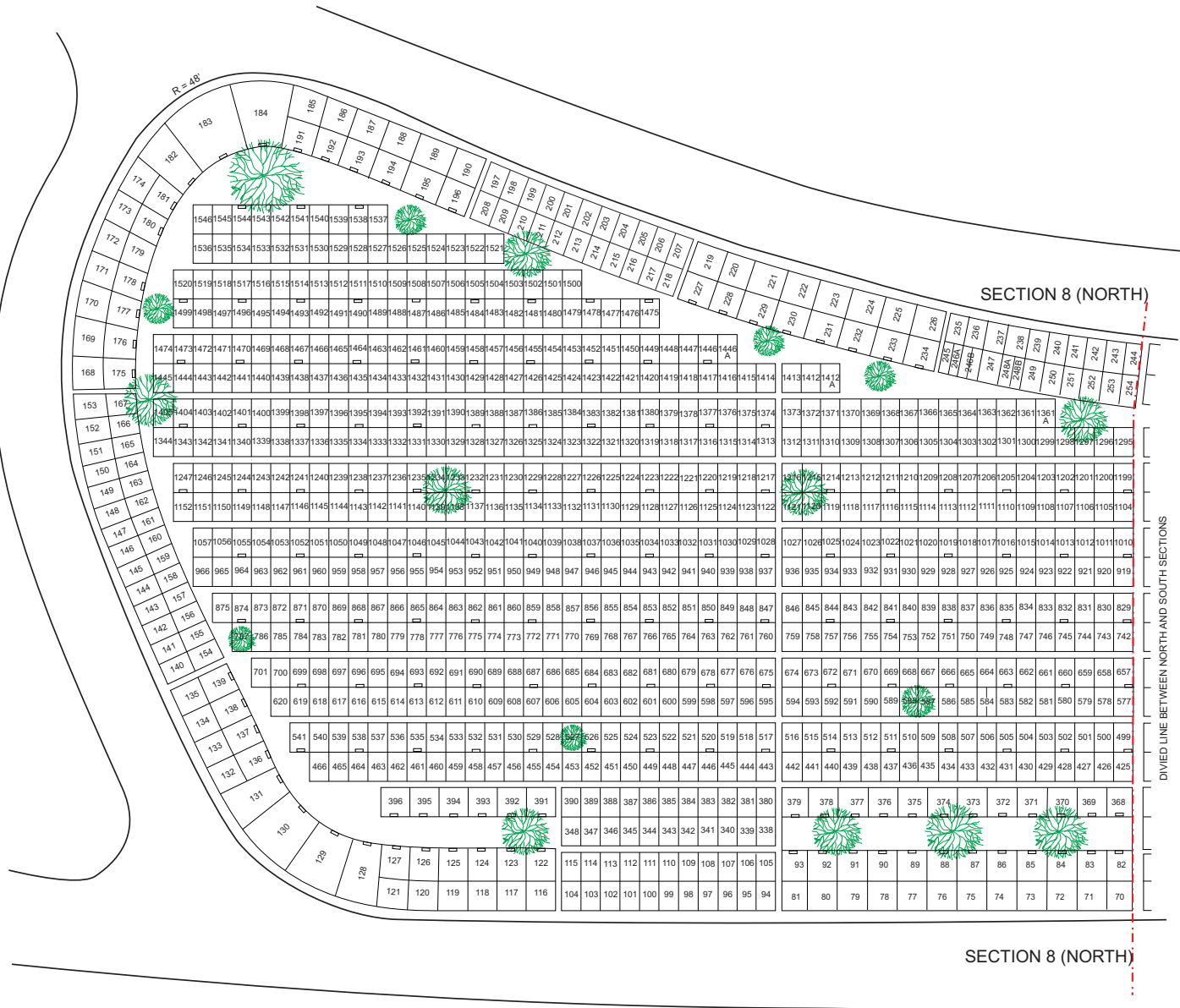
- NOTE
- 1) GRAVES ARE 3' x 8'
 - 2) Lots 16' x 6' lots (unless otherwise noted on the plan)
 - 3) ALL PATHS ARE 2' WIDE



Disclaimer: The information shown on this map is based on documents and information supplied by the client. Accuracy of images is not suitable for engineering purposes. topoGraphic assumes no responsibility for it's content.

SAINT MARY CEMETERY
SECTION 7 Reviewed August 2010 J.F. Burns
NOTE: The scale, grave location and requirements shown are for general reference use only. This is not a site surveyed document.
Scale: 1" = 16'
Sheet 3 of 11
Copyright © 2006 by topoGraphic.com

SECTION 8 (NORTH)



- NOTE**
- 1) GRAVES ARE 3' X 9'
 - 2) Lots 6' x 9' or 9' x 9' lots (unless otherwise noted on the plan)
 - 3) ALL PATHS ARE 2' WIDE

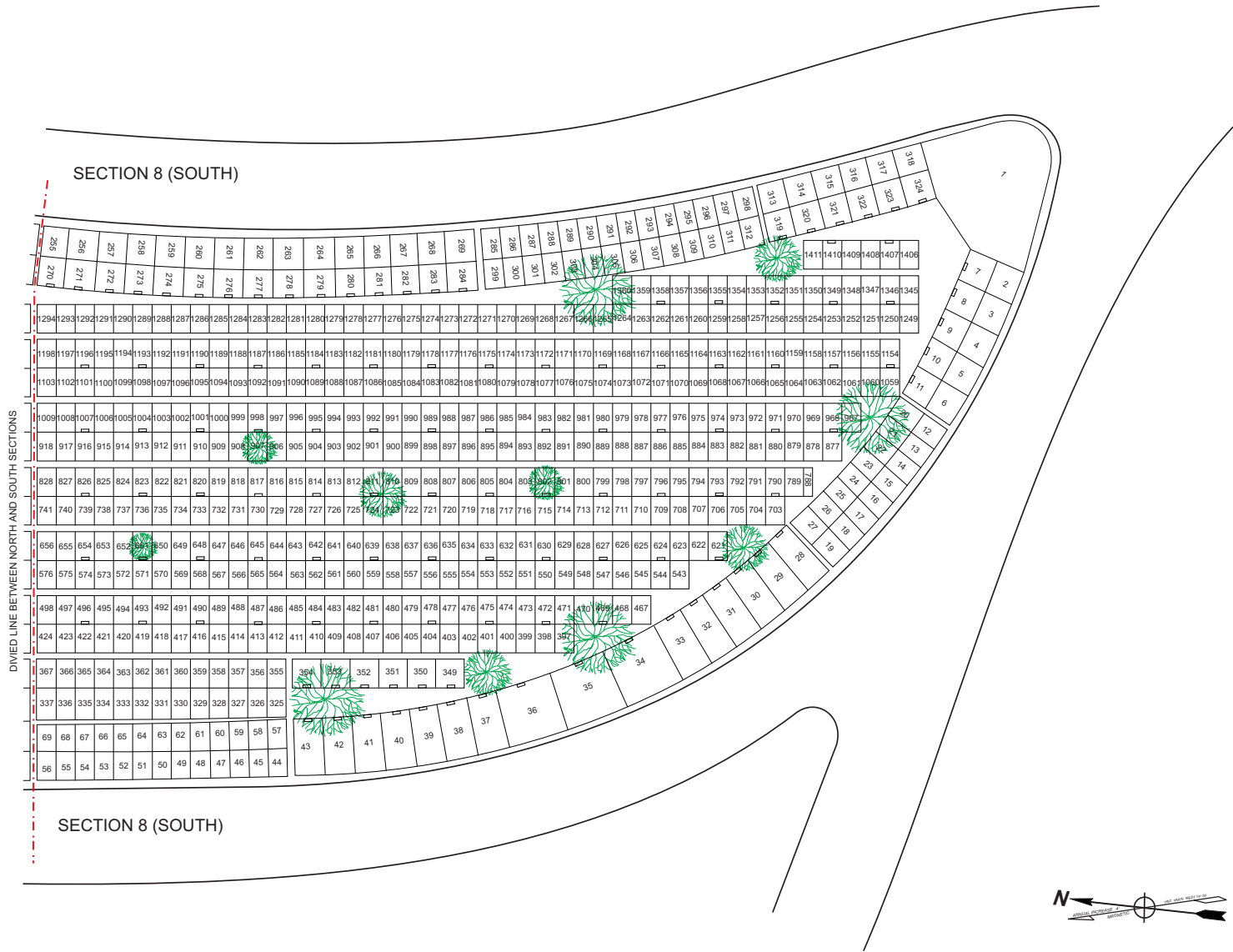


Disclaimer: The information shown on this map is based on documents and information supplied by the client. Accuracy of images is not suitable for engineering purposes. topo2d plus assumes no responsibility for it's content.



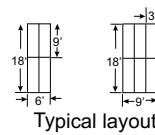
SAINT MARY CEMETERY
 SECTION 8 (NORTH) Modif. August 2010 -JFB
 NOTE: The scale, grave location and measurements shown are for general reference use only. This is not a site surveyed document.
 Scale: 1" = 16
 Sheet 4 of 11
 Copyright © 2008 by topoGraphix.com

SECTION 8 (SOUTH)



SECTION 8 (SOUTH)

SECTION 8 (SOUTH)

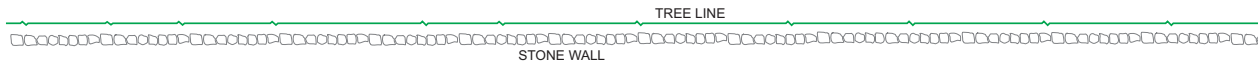


- NOTE
- 1) GRAVES ARE 3' X 9'
 - 2) Lots 6' x 9' or 9' x 9' lots (unless otherwise noted on the plan)
 - 3) ALL PATHS ARE 2' WIDE

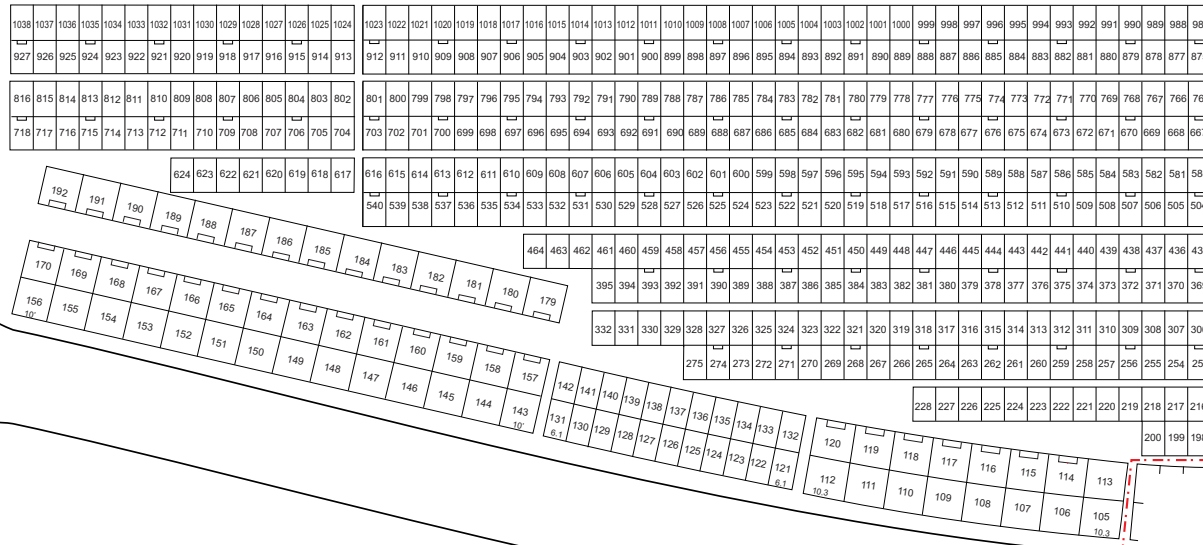


Disclaimer: The information shown on this map is based on documents and information supplied by the client. Accuracy of images is not suitable for engineering purposes. topoG is not responsible for its content.

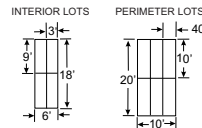
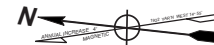




SECTION 9 (NORTH)



SECTION 9 (NORTH)



Typical layout
Unless otherwise noted on the plan.



Disclaimer: The information shown on this map is based on documents and information supplied by the client. Accuracy of images is not suitable for engineering purposes. topoGRAPHIX assumes no responsibility for it's content.

SECTION 9 (NORTH)



SAINT MARY CEMETERY
SECTION 9 (NORTH) Reviewed Aug 2010 - JB

NOTE: The scale, grave location and measurements shown are for general reference use only. This is not a site surveyed document.

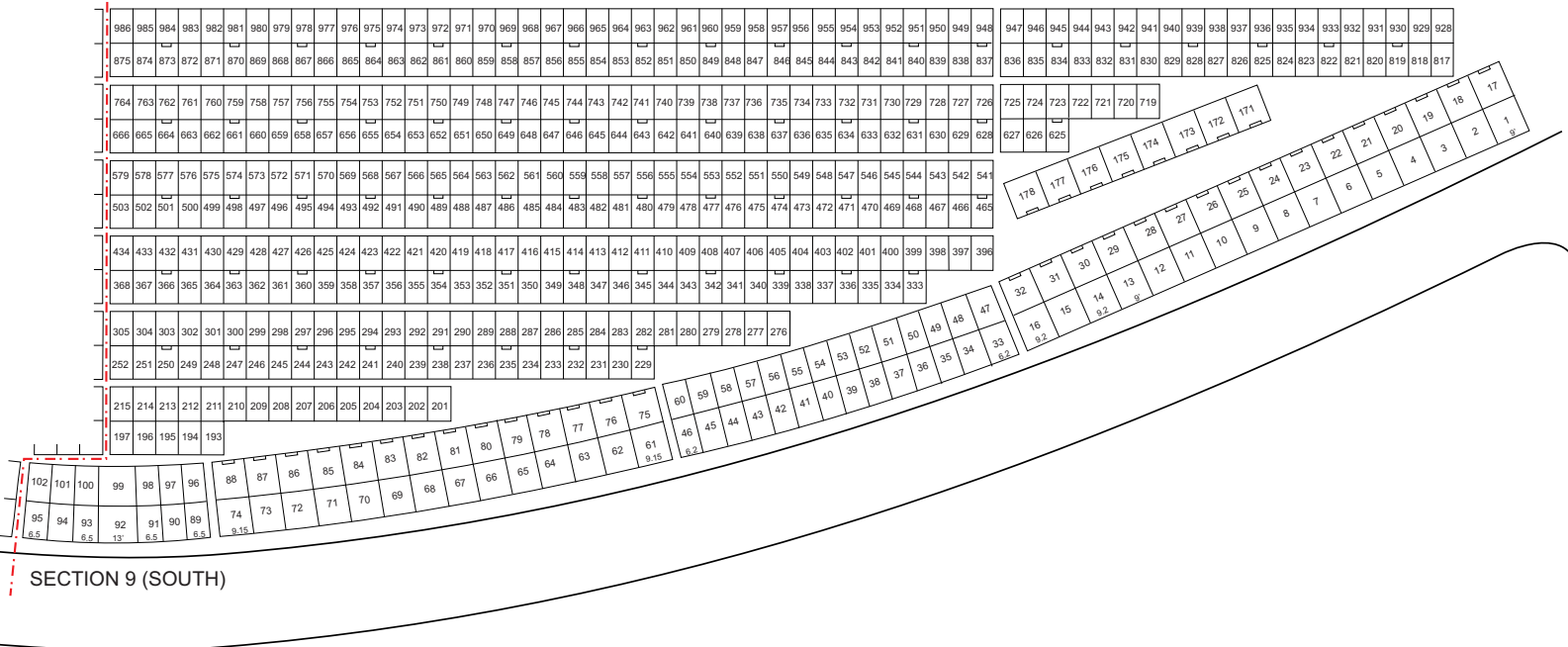
Scale: 1" = 16'

Sheet 7 of 11

Copyright © 2006 by topoGRAPHIX.com



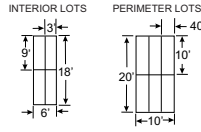
SECTION 9 (SOUTH)



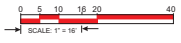
SECTION 9 (SOUTH)



AREA = 2.1 ACRES



Typical layout
Unless otherwise noted on the plan.



Disclaimer: The information shown on this map is based on documents and information supplied by the client. Accuracy of images is not suitable for engineering purposes. topoGraphix assumes no responsibility for it's content.

SECTION 9 (SOUTH)

SAINT MARY CEMETERY

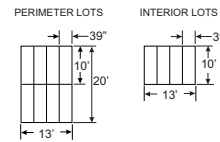
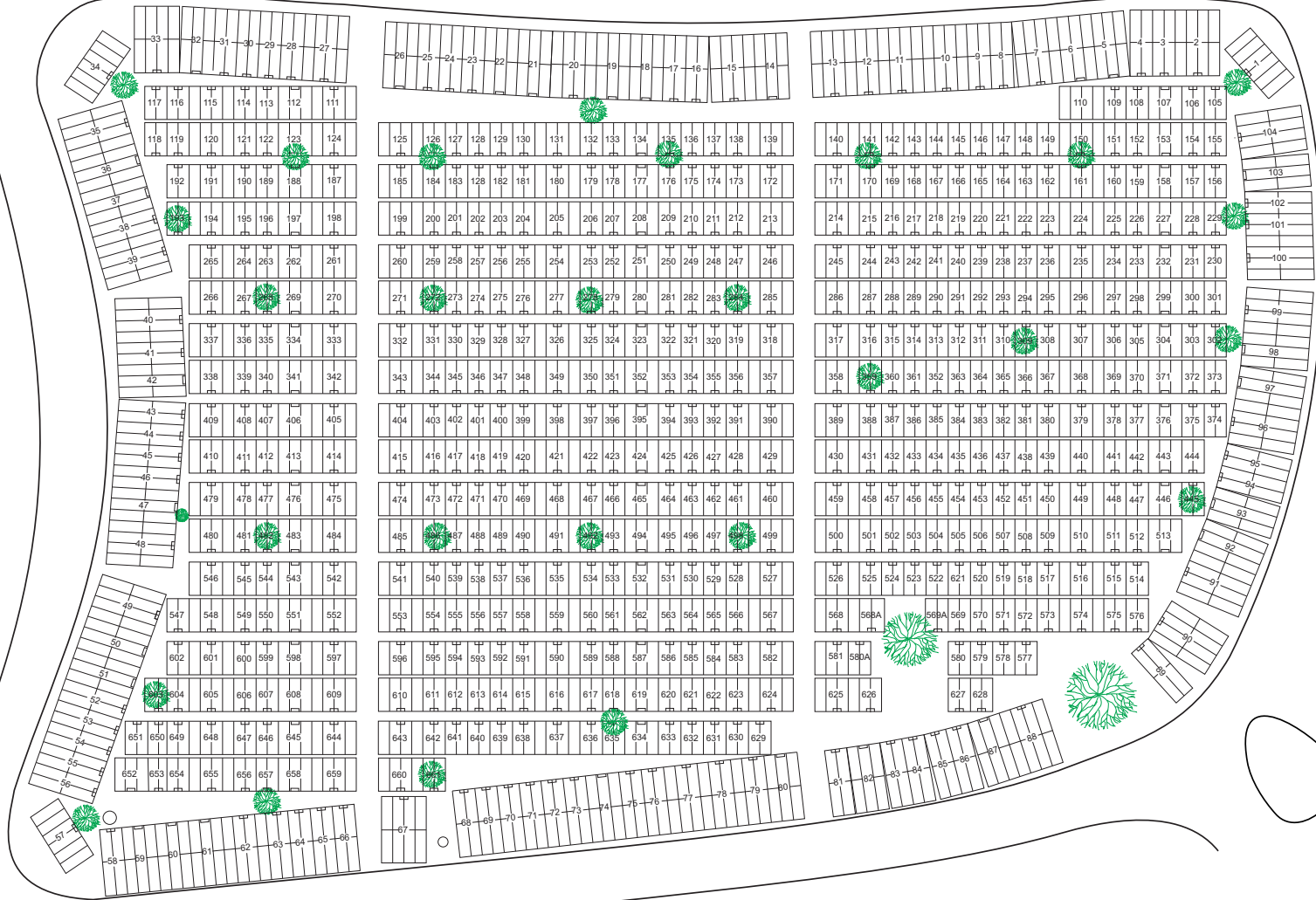
SECTION 9 (SOUTH) Reviewed Aug 2010 JB

NOTE: The scale, grave location and measurements shown are for general reference use only. This is not a site surveyed document.

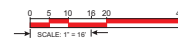
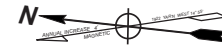
Scale: 1" = 16'
Sheet 8 of 11

Copyright © 2006 by topoGraphix.com

SECTION 11



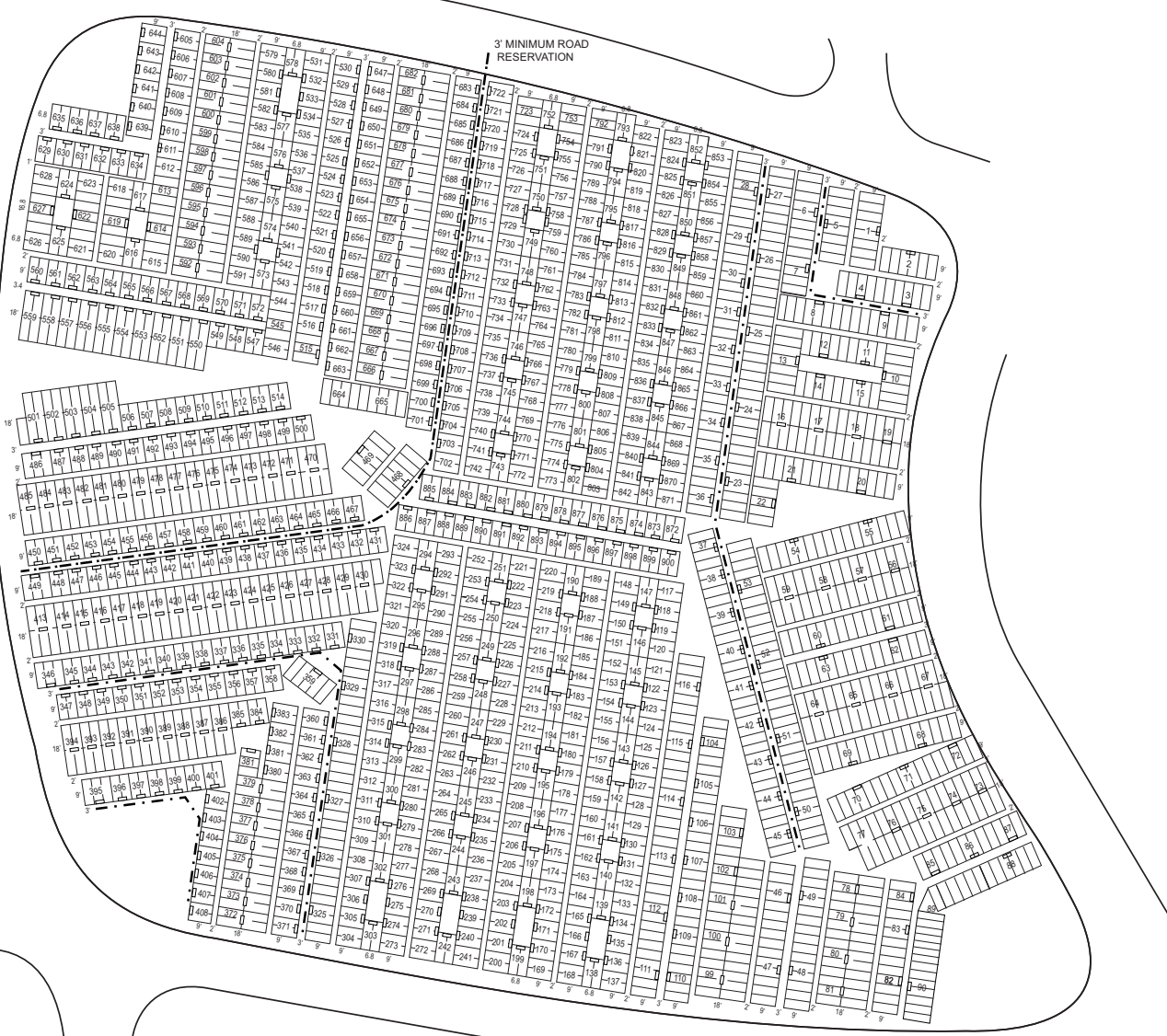
Typical layout
Unless otherwise noted on the plan.



SAINT MARY CEMETERY
SECTION 11 Modified Aug 2010 - J F Burns
NOTE: The scale, grave location and measurements shown are for general reference site only. This is not a site surveyed document.
Scale: 1" = 16'
Sheet 10 of 11
Copyright © 2008 by topoGraphix.com

Disclaimer: The information shown on this map is based on documents and information supplied by the client. Accuracy of images is not suitable for engineering purposes. topoG is plus assumes no responsibility for it's content.

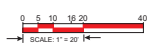
SECTION 12



3' MINIMUM ROAD RESERVATION

3' MINIMUM ROAD RESERVATION

- NOTE
- 1) GRAVES ARE 3'4" X 9 OR 10
 - 2) ALL PATHS ARE 2' WIDE UNLESS OTHERWISE NOTED ON THE PLAN
 - 3) ALL PLANTING ROWS ARE 3' WIDE
 - 4) - - - - 3' MINIMUM ROAD RESERVATION

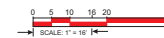


SAINT MARY CEMETERY
 SECTION 12 Modified Aug 2010 - J F Burns
 NOTE: The scale, grave location and measurements shown are for general reference use only. This is not a site surveyed document.
 Scale: 1" = 20'
 Sheet 11 of 11
 Copyright © 2008 by topoGraphics.com

Disclaimer: The information shown on this map is based on documents and information supplied by the client. Accuracy of images is not suitable for engineering purposes. topoGraphics assumes no responsibility for it's content.



SECTION 14



Disclaimer: The information shown on this map is based on documents and information supplied.
Accuracy of images is not suitable for engineering purposes.

SAINT MARY CEMETERY	
Created December, 2010 - John F Burns	
NOTE: The scale, grave location and measurements shown are for general reference use only. This is not a site surveyed document.	Scale: 1" = 20'
Sheet 11 of 11	
Copyright © 2010 by St Mary Cemetery	